



Quincy Lab, Inc.
1925 N. Leamington Ave.
Chicago, Illinois 60639
PHONE: 800-482-HEAT
FAX: 773-622-2282

THE GC AND AF SERIES LAB OVENS CONTENTS AND INSTRUCTIONS

CONTENTS

- (1) Oven
- (1) Thermometer (GC model only*)
- (1) *Rubber thermometer grommet
- (2) Adjustable wire shelf
- (4) Wire shelf bracket

RECEIVING

After unpacking, verify receipt of correct quantities of each component and that each component has not suffered any shipping damage. If there are any problems, please refer to the enclosed **Damaged/Missing Item Report**.

INSTRUCTIONS

1. Install adjustable shelf by placing the ends of the wire shelf bracket into the corresponding holes located on the inner sides of the oven at the desired height. Push the ends of the bracket into the holes until the first bends in the bracket are against the wall, then rotate the bracket down. Place the shelf on the brackets. (FIG 1)

2. FOR GC MODELS WITHOUT A DIAL THERMOMETER - Remove the glass thermometer from its container and place it in the rubber grommet. Insert the grommet into one of the ports on top of the oven and adjust the thermometer so that it extends at least 1 inch into the oven chamber. **WARNING:** A glass thermometer is not included with the AF models and should not be used with one since it would interfere with the fan blades at the top of the oven.

3. Plug into a 115/230 volt receptacle depending upon the voltage of the oven one has.

4. FOR 10GC AND 10AF MODELS - Switch on the ON/OFF power toggle switch. Turn the thermostat control knob clockwise to around the number "8". The light will come on indicating heater action. Check the reading of the thermometer until it reaches the desired temperature. Next rotate the control knob very slowly counter clockwise until the light goes out. The thermostat will then cycle automatically with the light indicating heater action. Turn the oven off with the ON/OFF power toggle switch, saving the temperature setting for the next use.

5. FOR 20, 30, 40GC AND 20, 30, 40AF MODELS - These models come equipped with the dual range quick-set knob and dial. This feature makes it easier to hit a target temperature range from a cold start, whether using the Fahrenheit or Centigrade scale. Switch on the ON/OFF power switch. Turn the thermostat knob to the desired

CAUTION:

DO NOT USE WITH FLAMMABLE SOLVENTS, VAPORS, OR GASSES.

EXTERIOR OVEN SURFACES MAY BECOME HOT WHEN IN USE.

DO NOT USE EXTENSION CORDS WITH THE OVEN

DO NOT LEAVE OVEN UNATTENDED DURING OPERATION.

DO NOT PUT DRIP TRAY OR FOIL OVER FIXED SHELF IN BOTTOM OF OVEN. AIR MUST CIRCULATE FREELY AROUND HEATING ELEMENTS FOR PROPER OPERATION.

DO NOT OPERATE AF MODELS WITHOUT FAN.

DO NOT OPERATE OVEN WITHOUT (4) RUBBER FEET. AIR MUST CIRCULATE FREELY UNDERNEATH THE CABINET FOR PROPER COOLING OF ELECTRICAL COMPONENTS.

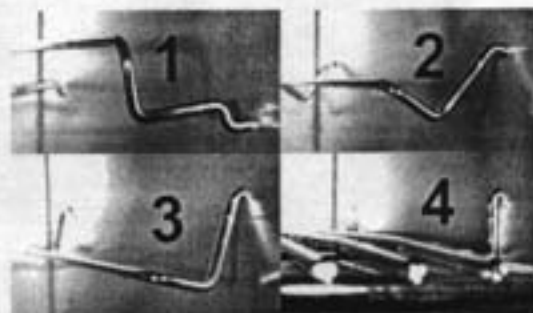


FIG. 1

temperature indicated on the knob (Fahrenheit) or the dial (Centigrade).

6. To set a target temperature in degrees Fahrenheit, turn the knob in a clockwise direction until the desired number on the knob is directly under the white triangle with the °F in its center. (FIG 2)

7. To set a target temperature in degrees Centigrade, turn the knob in a clockwise direction until the white triangle with the °C in its center is pointing toward the desired number printed on the face of the control panel (the dial). (FIG 3)

8. The thermostat should be allowed to cycle at temperature a few times before using the oven. This will allow the interior metal of the oven to reach temperature and stabilize at operating temperature.

Note: The temperatures printed on the dial are designed as a convenience to help quickly set a temperature within a close proximity to a the indicated dial temperature. Small rotational adjustments to the dial will likely be required to set a more precise temperature setting as measured against a reading from the glass thermometer or other external measurement device. Also, any degree of offset observed for a given setting can vary for other temperature settings on the dial. Overtime, continuous use at a single temperature setting may require periodic re-adjustment as the contacts ware or as ambient temperatures change seasonally or from air conditioning or heating.

9. Load the oven so that air circulation within the oven is not impaired. Here are some general guidelines:

- Stagger articles on the shelves.
- Do not overload. This will show by non-uniform processing and long processing times.
- Leave a space between articles being processed.
- Hang flat sheet from top shelf.
- For flat sheets, allow gaps between each for air circulation.
- For best processing performance for a single item, adjust one shelf so that the article is centered in the oven.

Maintenance

To clean exterior and interior surfaces, use a damp cloth with or without an all-purpose cleaner. Oven cleaners can harm interior surface. Periodic lubrication and keeping rear air intake ports clear of obstruction and clean from dust and dirt will greatly prolong motor life.

Tech Support

If you have any questions or need technical assistance, please contact Quincy Lab customer support at

Email: info@quincylab.com
Voice: 800-482-HEAT
Fax: 773-622-2282

Quincy Lab, Inc.
1925 N Leamington Ave
Chicago, Illinois 60639

Limited Warranty

The standard warranty period for this instrument is eighteen months from date of shipment. The instrument warranty is supplemented with a two year warranty on the heating element. Please refer to your invoice or shipping documents to determine the appropriate warranty dates. Quincy Lab, Inc. warrants to the original purchaser that this product will be free from defects in material and workmanship under normal use throughout the warranty period.



Visit us at our web site
www.quincylab.com

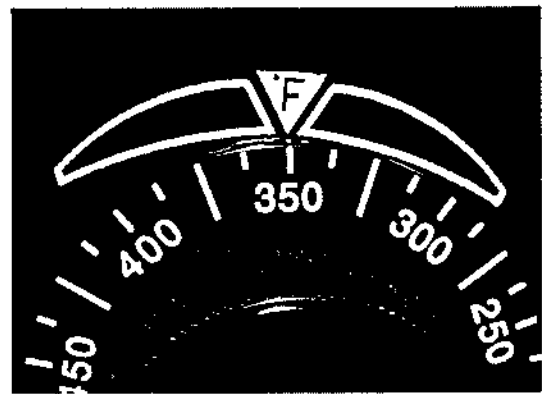


FIG. 2

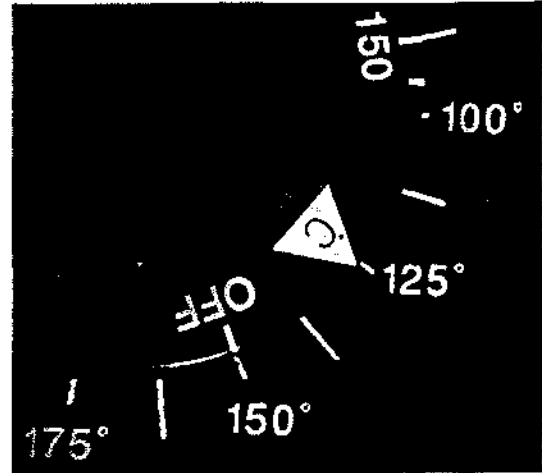


FIG. 3