

Strut Systems



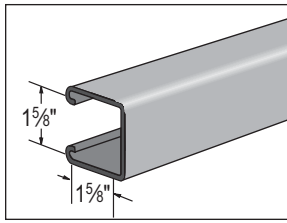
Hundreds of uses!

Unistrut® Non-Metallic Strut Systems

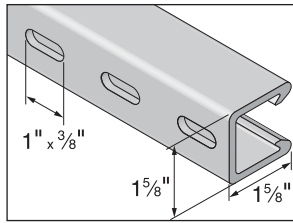
- Interchangeable with industry steel channels
- FRP construction ensures strength and corrosion resistance

Easy to cut and drill

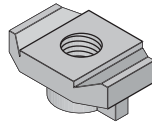
These non-metallic strut systems are made from FRP (fiberglass reinforced polyester). Use them where steel just doesn't hold up, such as manholes, chemical feed areas, salt water environments and more. All materials are UV resistant, and handle temperatures from -30 to 150°F. If you need assistance configuring your system, give us a call. We can help.



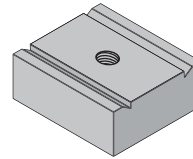
A 5' Standard Channel



B 5' Slotted Channel

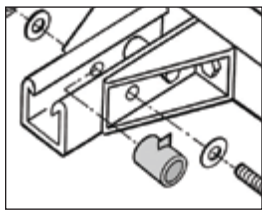


C Standard-Duty Channel Nut

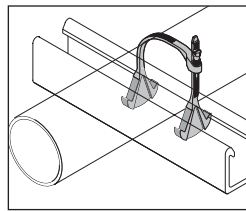


D Heavy-Duty Channel Nut

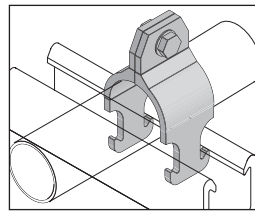
- Pipe mounts, ceiling and wall
- Pipe supports
- Adjustable motor bases
- Chemical feed pump wall mounts
- Adjustable level sensor brackets
- Electric panel supports
- Tank stands



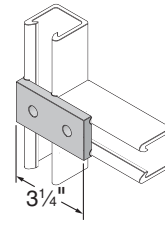
E Channel Spacer
Accommodates 3/8" & 1/2" Bolts



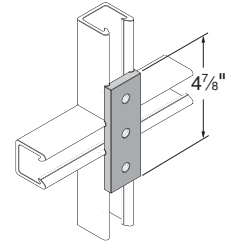
F Adjustable Pipe Clamp



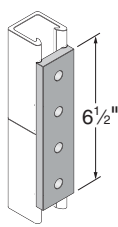
G Rigid Pipe Clamp



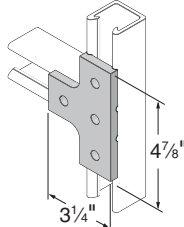
H Two-Hole Splice Plate



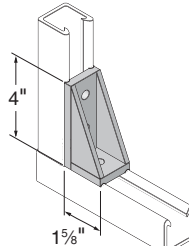
I Three-Hole Splice Plate



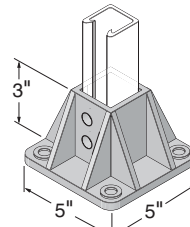
J Four-Hole Splice Plate



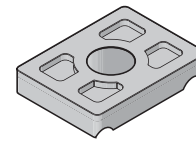
K Four-Hole T Plate



L Angle Bracket



M Single Post Base



N Saddle Clip

Channels

Shipping: Additional handling fees apply.

KEY	MFR #	DESCRIPTION	STOCK #	EACH
A	F20P-2000	5' Standard Channel	70850	\$
B	F20P-2200	5' Slotted Channel	330865	

Channel Nuts

KEY	MFR #	THREAD	STOCK #	EACH
STANDARD-DUTY (FOR LIGHT-DUTY APPLICATIONS NOT REQUIRING HIGH THREAD SHEAR VALUES)				
C	250PU-CN	1/4"-20	70867	\$
	375PU-CN	3/8"-16	70868	
	500PU-CN	1/2"-13	70869	

HEAVY-DUTY (FOR APPLICATIONS REQUIRING HIGH THREAD SHEAR VALUES OR SPRING NUTS)

D	375PU-CNHD	3/8"-16	70865	\$
	500PU-CNHD	1/2"-13	70866	

Channel Spacers

KEY	MFR #	DESCRIPTION	STOCK #	EACH
E	50PU-500SP	3/8" to 1/2" Spacers	70070	\$

Adjustable Pipe Clamps

Use safely in temps up to 160°F. Do not exceed 3 ft-lbs of torque.

KEY	MFR #	PIPE OD RANGE	OVERHEAD DESIGN LOAD	STOCK #	EACH
	200-3100	1/2" to 1 1/2"	135 lbs	70875	\$
F	200-3110	1 1/2" to 2 1/4"	135 lbs	70876	
	200-3120	2 1/4" to 3 1/4"	145 lbs	70877	
	200-3130	3" to 4"	215 lbs	70878	

Rigid Pipe Clamps

Use safely in temps up to 160°F. Do not exceed 3 ft-lbs of torque.

KEY	MFR #	NOMINAL PIPE SIZE	OVERHEAD DESIGN LOAD	STOCK #	EACH
	PCR-050	1/2"	225 lbs	70880	\$
G	PCR-075	3/4"	225 lbs	70881	
	PCR-100	1"	225 lbs	70882	
	PCR-125	1 1/4"	225 lbs	70883	
G	PCR-150	1 1/2"	225 lbs	70884	
	PCR-200	2"	225 lbs	70885	
	PCR-250	2 1/2"	225 lbs	70886	
G	PCR-300	3"	225 lbs	70887	
	PCR-400	4"	300 lbs	70888	

Framing Fittings

KEY	MFR #	DESCRIPTION	HOLE SIZE	STOCK #	EACH
H	20P-2500	2-Hole Splice Plate	9/16"	79778	\$
I	20P-2502	3-Hole Splice Plate	9/16"	70860	
J	20P-2504	4-Hole Splice Plate	9/16"	70859	
K	20P-2512	4-Hole T Plate	9/16"	79779	
L	50PU-2936	Angle Bracket, w/ Splines	9/16"	79780	
	50PU-2636	Angle Bracket, w/o Splines	9/16"	70848	
M	20PU-5853	Single Post Base (1 1/8")	9/16"	70845	
N	200-4226	Saddle Clip	3/8"	79781	
	200-4217	Saddle Clip	1/2"	79782	