

Product SPOTLIGHT

Proactively solve grease problems!

Jetfoam™ and EHC-33™

- Clean and maintain your collection system
- Increase flow while decreasing stoppages
- Use separately or together for a powerful grease-eliminating program

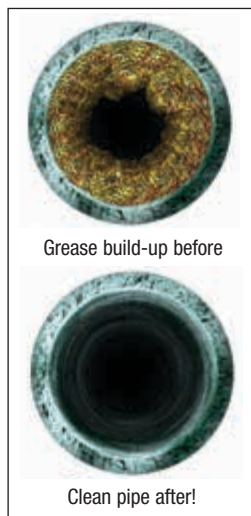


Normal sewer jetting operations frequently require multiple passes through the line. Jetfoam and EHC-33 remove grease build-up and keep your lines clean. They eliminate stoppages, unpleasant odors and untimely service interruptions. **Shipping:** Quantities of 7+ ship motor freight.

Jetfoam

- Nonhazardous formula liquefies grease

Jetfoam liquefies grease and keeps it in suspension, letting you achieve superior cleaning results in a single pass. It dramatically improves your jetter's speed and effectiveness in treating grease problems. Jetfoam is an environmentally friendly non-corrosive surfactant blend that lets you clean twice as much sewer in the same amount of time.



Grease build-up before

Clean pipe after!

EHC-33

- Removes grease build-up

EHC-33 has been eliminating sewer grease build-up in collection systems for over two decades. It is an industrial-strength blend of synergistically selected bacteria strains designed to aggressively metabolize or consume sewer grease.

EHC-33 begins to work the moment it enters your system. It tackles the components that actually make up grease: proteins, fats and carbohydrates. This blend of bacteria lives and reproduces in an environment containing no "free" or dissolved oxygen. The 8-oz ready-to-use, water-soluble bags eliminate pre-mixing, measuring and soaking prior to use.

DESCRIPTION	STOCK #	EACH	QTY 4-11	QTY 12+
Jetfoam, 5-Gallon Pail	48163	\$	\$	\$
EHC-33, 25-Pound Pail, 50 Packets	48165			

Use Jetfoam and EHC together for a powerful grease-eliminating program!



Step 1: Use Jetfoam for initial line or lift station cleaning.



Step 2: Use EHC-33 for continued maintenance.

Watch a demo on our website:

www.usabluebook.com/t-videogallery.aspx



EHC-33 comes in water-soluble 8-oz bags.

Jetfoam

Jetfoam Dosing Chart

Pipe Size	4 to 6"	8 to 10"	12 to 14"	16 to 18"
Gallons of Jetfoam per 100 Gallons of Water	1/2	1	2	3

EHC-33 Dosing Chart

Recommended Doses of EHC-33 for Lift Stations, Force Mains & Siphons

Time of Treatment	Amount of Treatment	Details
For facilities having less than 50,000 gallons per day		
First 2 days	2 bags per day	Per 10,000 gallons of daily flow
Next 5 days	1 bag per day	Per 10,000 gallons of daily flow
Thereafter	2 bags per week	Per 10,000 gallons of daily flow

For facilities having less than 100,000 gallons per day

First 2 days	8 bags per day	Per 100,000 gallons of daily flow
Next 5 days	3 bags per day	Per 100,000 gallons of daily flow
Thereafter	3 bags per week	Per 100,000 gallons of daily flow

For facilities having less than 300,000 gallons per day

First 2 days	8 bags per day	Per 100,000 gallons of daily flow
Next 5 days	4 bags per day	Per 100,000 gallons of daily flow
Thereafter	6 bags per week	Per 100,000 gallons of daily flow

Recommended Doses of EHC-33 for Gravity Mains & Feeder Lines

Daily treatment rate below is for four days per 500 foot section. Once clean, switch to the maintenance dose for weekly treatment. Weekly rate is per 1000 feet of line.

Diameter of Line	Daily Treatment	Weekly Treatment
4"	1 bag	1 bag
6"	1 bag	1 bag
8"	2 bags	2 bags
10"	4 bags	3 bags
12"	5 bags	4 bags
14"	6 bags	5 bags
16"	8 bags	6 bags