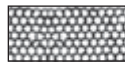




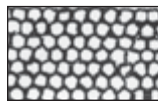
Duplex Model



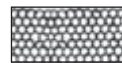
Duplex Model Cutaway



1/32" Mesh Actual Size



1/16" Mesh Actual Size



1/32" Mesh Actual Size



Hayward® Plastic Basket Strainers

- Strong corrosion-resistant construction



Eastar Simplex Model

Basket strainers are ideal where you need to collect a lot of material. They feature a minimum 6:1 open area ratio in relation to the pipe size. Baskets are constructed of PVC and have either 1/32" or 1/16" perforations. Other basket sizes and materials are available; contact us for details.

Choose from strainers with either PVC or clear Eastar™ housings. All feature true union connections (socket or threaded) on the inlet and outlet, giving you the flexibility to design a loop flow pattern.

Note: Never use these strainers where excessive water hammer or vibration is present.

Shipping: 3" and 4" duplex basket strainers ship motor freight.

Eaton® Cast-Iron Basket Strainers

- Quick-opening covers do not require tools to open
- Heavy gauge cast-iron construction ensures long life and durability

Formerly sold under the Hayward name, these basket filters have been the industry standard for 75 years. Both simplex and duplex models have threaded drains, machined basket seats and standard 1/32" perforated stainless steel baskets.

Simplex models minimize space requirements. They must have isolation valves installed before and after for cleaning.

Duplex models operate continuously while under pressure. When one basket fills with debris, flow can be diverted to the other side while the full basket is cleaned.

Working pressure for both models are 200 psi at 100°F. Other mesh and perforated replacement basket sizes are available as a special order. Contact USABlueBook for more details.

Shipping: 3" and larger simplex models and all duplex models ship motor freight.

FLANGE SIZE	WEIGHT (LBS)	STOCK #	EACH	1/32" SPARE BASKETS STOCK #	EACH
SIMPLEX BASKET STRAINERS					
2"	37	66382	\$	68721	\$
3"	76	66383		68722	
4"	125	66384		68723	
6"	200	66385		68724	
8"	500	66386		68725	
DUPLEX BASKET STRAINERS					
2"	209	68734	\$	68731	\$
3"	357	68735		68732	
4"	487	68736		68733	
6"	500	66390		68729	
8"	1500	66391		68730	

PIPE SIZE	OVERALL SIZE H* x L**	STRAINER SIZE	PVC STOCK #	EACH	EASTAR STOCK #	EACH
SIMPLEX BASKET STRAINERS						
1" True Union	9.63" x 11.64"	1/32"	65034	\$	90154	\$
1 1/2" True Union	13.38" x 15.89"	1/32"	65035		90155	
2" True Union	13.38" x 16.29"	1/32"	65036		90156	
3" NPT	19.83" x 20.36"	1/16"	65037		90157	
4" NPT	19.83" x 22.13"	1/16"	65038		90158	
4" FLG	19.83" x 22.13"	1/16"	65039		90159	
DUPLEX BASKET STRAINERS						
1" True Union	11.7" x 20.5"	1/32"	65040	\$	90160	\$
1 1/2" True Union	15.5" x 28.0"	1/32"	65041		90161	
2" True Union	15.5" x 28.0"	1/32"	65042		90162	
3" NPT	22.3" x 35.6"	1/16"	65043		90163	
4" NPT	22.3" x 38.7"	1/16"	65044		90164	
4" FLG	22.3" x 38.7"	1/16"	65045		90165	

* Allow 90% of height above strainer for basket removal.

** Simplex strainers are measured face to face on inlet and outlet connections; duplex strainers are measured from outside base to outside base.

Spare Baskets for Simplex & Duplex Strainers (New Style)

For baskets with old style strainers, contact USABlueBook.

PIPE SIZE	PVC STOCK #	EACH	CPVC STOCK #	EACH	SS 40 MESH STOCK #	EACH
1"	65046	\$	65049	\$	65052	\$
1 1/2" & 2"	65047		65050		65053	
3" & 4"	65048		65051		65054	